

# A Look at BEG's Center for Injection and Seismicity Research

January 2025 | Barry Friedman, Explorer Correspondent

In 2014, in the Bend Arch-Fort Worth Basin, when a concern about induced seismicity became a concern, the Railroad Commission of Texas asked the operators of those injection wells to help mitigate problems.

This was a seminal moment.

TXRRC, which was established in 1891 to regulate the oil and gas industry, has jurisdiction over a number of industries, including energy, natural gas pipeline transporters, natural gas and hazardous waste, and the LP-gas industry, critical natural gas infrastructure and other industries.

So, despite the implications of the Railroad Commission's decision, the industry was able to

# AAPG Explorer

Sign up to receive the Explorer newsletter, summarizing the top stories from print, sent every Thursday.

Email \*

**SIGN UP**

impacts fell well within their purview to investigate and mitigate.

"They didn't do it publicly," said Peter H. Hennings, principal investigator for the Center for Injection and Seismicity Research, about the Commission's work. "They began by working behind the scenes."

There were politics involved, corporate public relations, as well as the science to sort out.

At about the same time, representatives from the Texas Legislature approached Scott Tinker, then-director of the University of Texas' Bureau of Economic Geology, to ask if there was anything that the Bureau and other units at UT could do to address the earthquakes in the Fort Worth Basin and elsewhere in Texas. The result was the appropriation of funding in 2015 for the establishment of the TexNet Earthquake Monitoring program at the Bureau. That's how TexNet, Texas' earthquake monitoring system was formed.

Please log in to read the full article

[Log in to Submit a Comment](#)

Comments (0)

## You may also be interested in ...

### Popular articles

Article

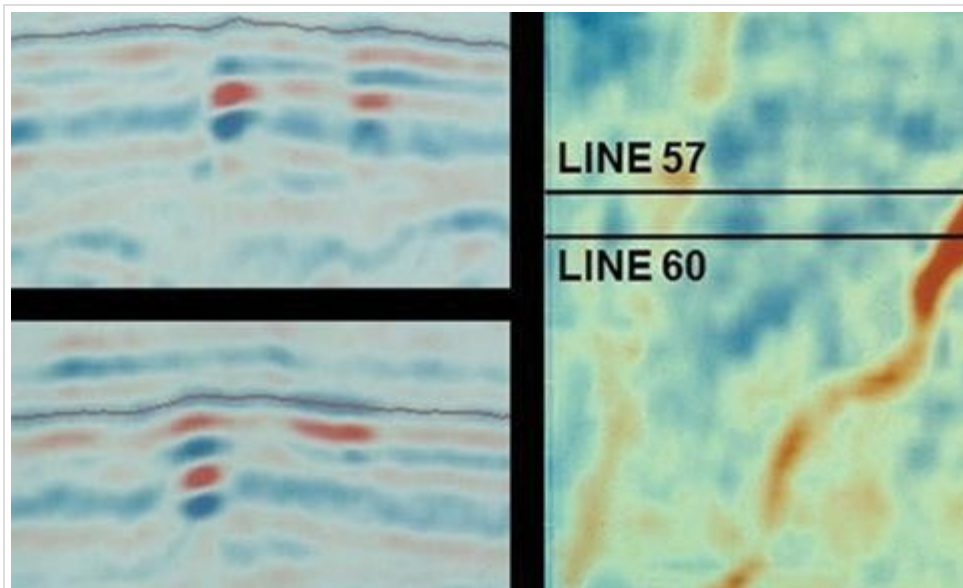


Emphasis Article





Geophysical Corner



Article

